

UNIC

**MINI
CRAWLER
CRANE**



UNIC MINI CRAWLE



UNIC mini crawler crane is incredibly compact and useful lifting equipment.



UNIC is **Compact**

UNIC mini crawler cranes are excellent lifting equipment that quickly, safely and easily meets all of restricted and confined area lifting requirements.



UNIC is **Powerful**

UNIC mini crawler cranes are powerful lifting tools in confined area where no other lifting equipments could have gone before.



UNIC is **Clean**

UNIC mini crawler cranes with electric power option are ideal for working indoors where exhaust fumes are strictly restricted. Electric motor cuts down the pollution and noise levels to a minimum.

R CRANE



URW295CP2AMRS

UNIC MINI CRAWLER CRANE

LINE-UP



URW094C

| | |
|-----------------------|----------------|
| Max. lifting capacity | 0.995t × 1.5m |
| Max. working radius | 5.17m |
| Max. hook height | 5.6m (Approx.) |
| Dimensions | (W) 595mm |
| | (H) 1290mm |
| | (L) 1870mm |
| Mass of crane | 1000kg |



URW295C

| | |
|-----------------------|----------------|
| Max. lifting capacity | 2.93t × 1.4m |
| Max. working radius | 8.41m |
| Max. hook height | 8.8m (Approx.) |
| Dimensions | (W) 600mm |
| | (H) 1375mm |
| | (L) 2690mm* |
| Mass of crane | 1850kg* |

*Petrol engine model



URW376C

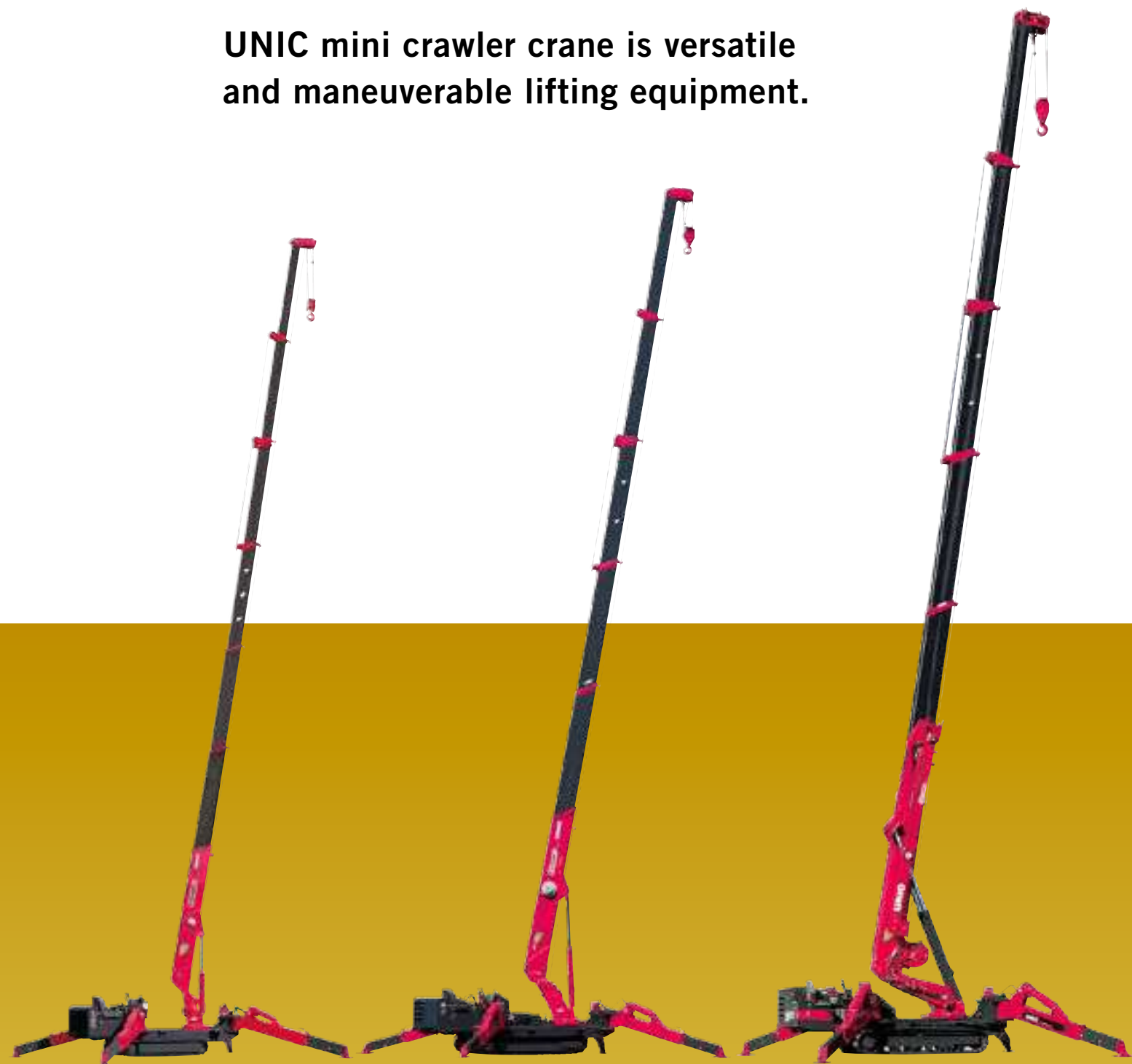
| | |
|-----------------------|-----------------|
| Max. lifting capacity | 3.03t × 2.5m |
| Max working radius | 14.45m |
| Max hook height | 14.9m (Approx.) |
| Dimensions | (W) 1300mm |
| | (H) 1805mm |
| | (L) 4340mm |
| Mass of crane | 3870kg |



URW546C

| | |
|-----------------------|-----------------|
| Max. lifting capacity | 4.05t × 2.5m |
| Max. working radius | 15.52m |
| Max. hook height | 16.0m (Approx.) |
| Dimensions | (W) 1380mm |
| | (H) 2035mm |
| | (L) 4870mm |
| Mass of crane | 4930kg |

UNIC mini crawler crane is versatile and maneuverable lifting equipment.



URW547C

| | |
|-----------------------|--|
| Max. lifting capacity | 4.05t × 2.5m |
| Max. working radius | 17.83m |
| Max. hook height | 18.2m (Approx.) |
| Dimensions | (W) 1380mm (H) 1980mm (L) 4950mm |
| Mass of crane | 5070kg |



URW706C

| | |
|-----------------------|--|
| Max. lifting capacity | 6.05t × 3.0m |
| Max. working radius | 18.60m |
| Max. hook height | 19.5m (Approx.) |
| Dimensions | (W) 1670mm (H) 2190mm (L) 5610mm |
| Mass of crane | 7990kg |

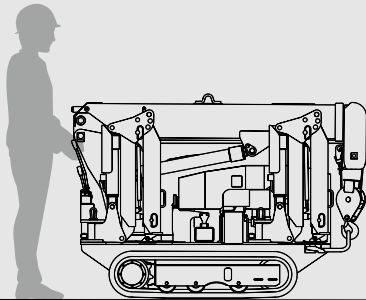


URW1006C

| | |
|-----------------------|--|
| Max. lifting capacity | 10.14t × 3.0m |
| Max. working radius | 21.93m |
| Max. hook height | 22.8m (Approx.) |
| Dimensions | (W) 2000mm (H) 2460mm (L) 6060mm |
| Mass of crane | 13840kg |

URW094C

URW094C is the smallest mini crawler crane in the range.



Max.
0.995t
×1.5m
Lifting capacity

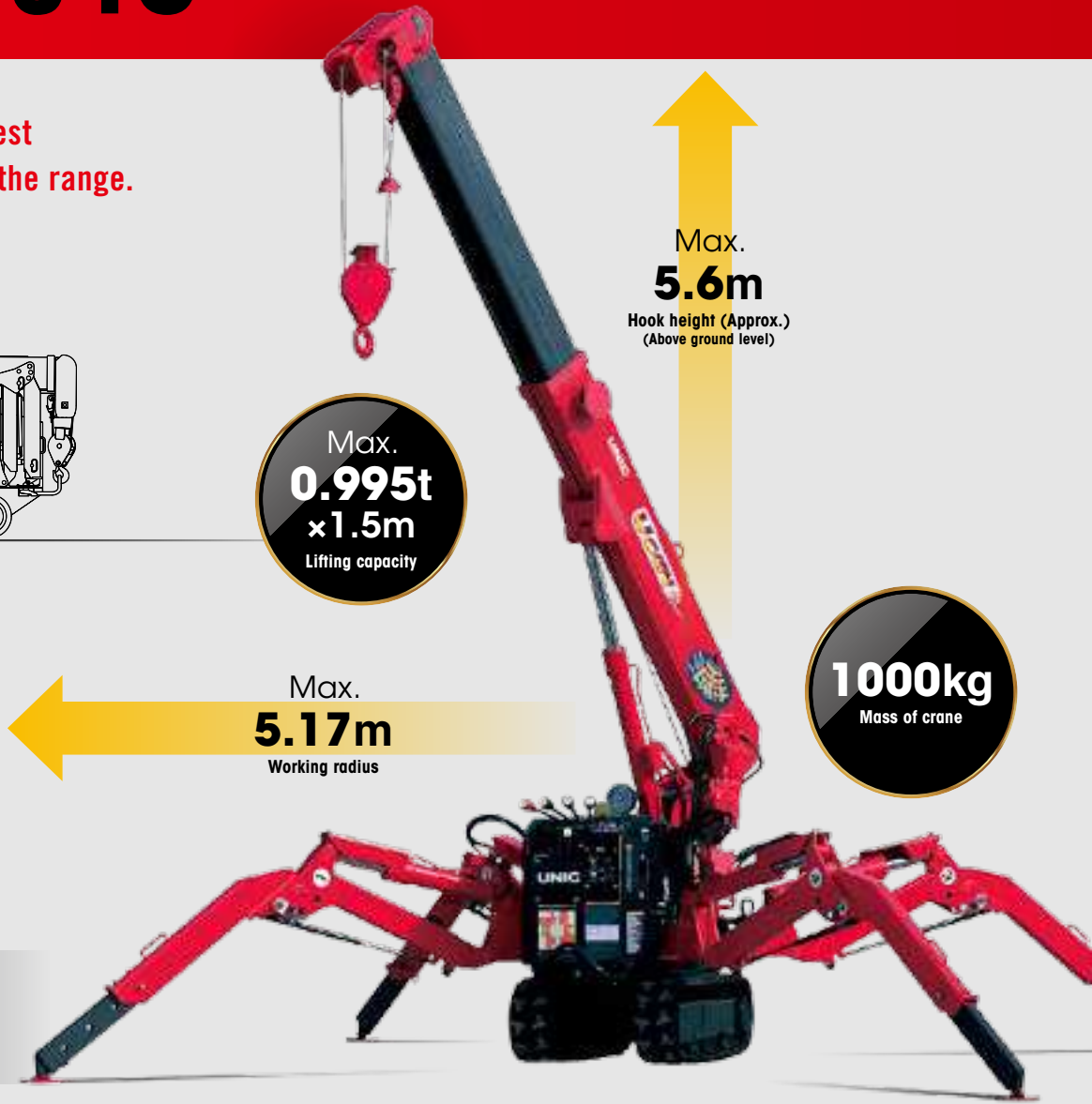
Max.
5.6m
Hook height (Approx.)
(Above ground level)

Max.
5.17m
Working radius

1000kg
Mass of crane



Radio remote control



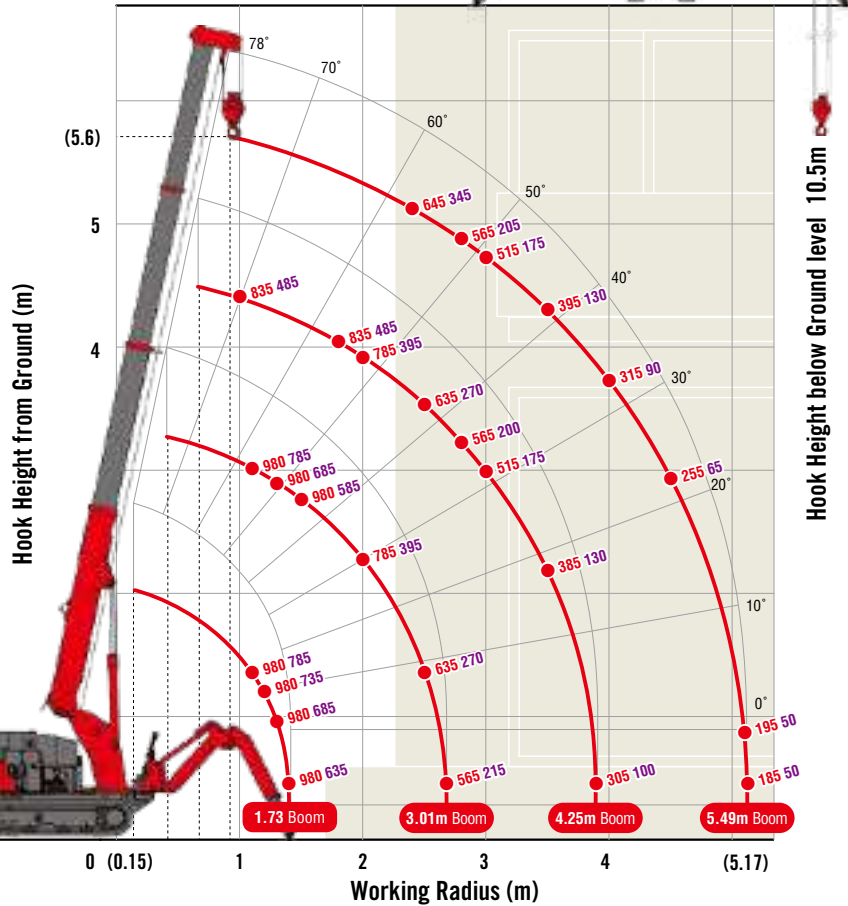
SPECIFICATIONS

| Crane model | URW094CP2E | |
|-----------------------------|--|--|
| Lifting capacity | Max. 0.995t at 1.5m | |
| Working radius | Min. 0.15m, Max. 5.17m | |
| Hook height (Approx.) | Above ground level | |
| | Below ground level | |
| Boom | Max. 5.6m | |
| | Max. 10.5m (with 2-part line) | |
| | Length | Min. 1.73m to Max. 5.49m |
| | Extending speed | 3.76m / 17 sec. |
| | Raising angle / speed | 0° to 78° / 6.5 sec. |
| Winch | Structure | 4-section box beam type telescoping boom |
| | Single line speed | 17 m/min (at 3rd layer) |
| | Hook speed | 8.5 m/min (at 3rd layer with 2-part line) |
| | Wire rope | Construction : 6 x Fi(29) GRADE B / Diameter x Length : 7mm x 27m / Breaking strength : 28.9kN [2950 kgf] |
| Slewing | Hook block | 0.98t capacity, single sheave with safety latch |
| | Range | 360° continuous rotation on a ball bearing race |
| Outriggers | Speed | 1.5 rpm |
| | | 3-steps (with damper) for bend and 4-steps extension. Double acting hydraulic cylinders with double pilot-operated check valves, direct pushing type (Directly connected with hydraulic automatic lock device) |
| Hydraulic pump | Type | Variable delivery piston pump |
| | Rated pressure | For crawling: 21.6 MPa [220 kgf/cm ²] For crane: 20.6 MPa [210 kgf/cm ²] |
| Hydraulic oil tank capacity | 17 liters | |
| Safety devices | Pressure relief valve for hydraulic circuit / Counterbalance valves for boom raising and boom telescoping cylinders / Double pilot-operated check valves for outrigger cylinders / Boom angle indicator with load indicator / Hook safety latch / Automatic stop for overwinding / Overwinding alarm / Automatic stop for leaving minimum wire rope / Emergency stop button (Ignition cut) / Inter-lock device of crane and crawling levers / Level / Load meter / Headlight | |

MINI CRAWLER CRANE

WORKING RANGE & NET RATED LOADS (kg)

Outrigger ● Max-extended NOT max-extended



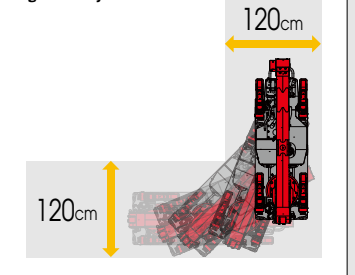
Automatic stop for overwinding



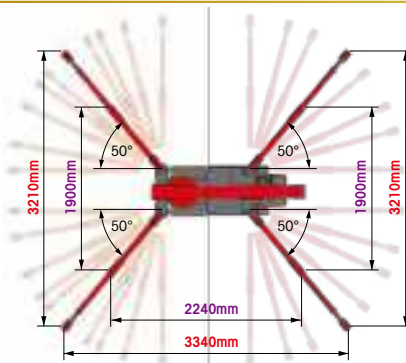
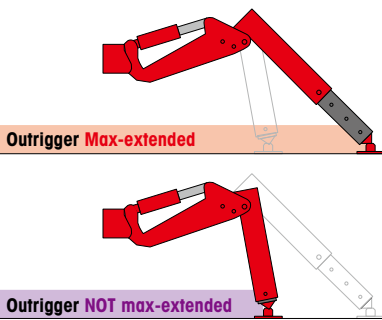
Wide departure angle



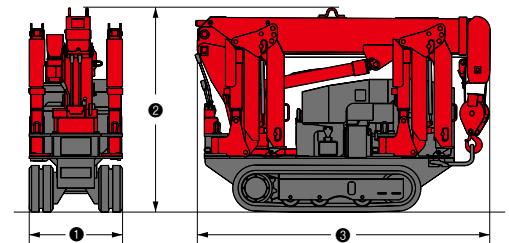
High mobility



OUTRIGGER POSITIONS



DIMENSIONS



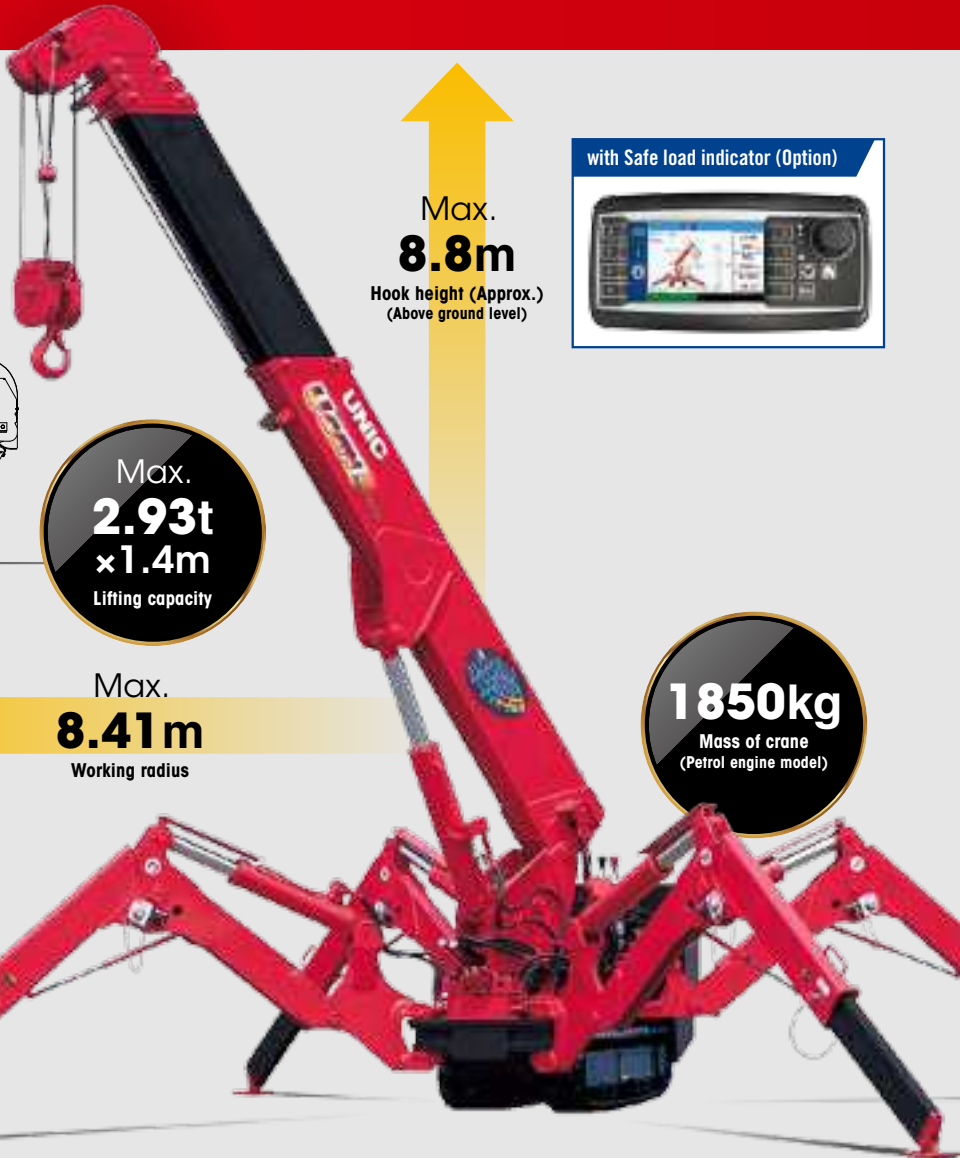
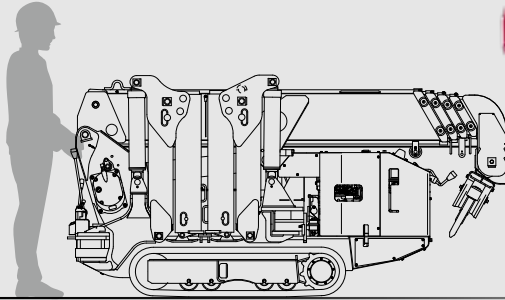
CRAWLING GEAR

| Crane model | URW094CP2E |
|-----------------------------|---|
| Crawling speed | 0-2.2 km/h, forward / backward |
| Hill climbing ability | 20° |
| Tread length × width | 900mm × 150mm |
| Ground contact pressure | 36.3 kPa [0.37 kgf/cm ²] |
| Engine manufacturer / model | Mitsubishi / GB300LE |
| Displacement | 296cc |
| Maximum output | 5.5kW(7.5PS) / 1800 rpm, Rated output |
| Fuel | Petrol |
| Fuel tank capacity | 6 liters |
| Steering | Hydraulic drive independent of left / right |

| Crane model | URW094CP2E |
|----------------|------------|
| 1 Total width | 595mm |
| 2 Total height | 1290mm |
| 3 Total length | 1870mm |
| Mass of crane | 1000kg |

URW295C

URW295C is narrow enough to allow access through standard size single doorway, but with 2.93t of lifting power.



Max.
2.93t
x 1.4m
Lifting capacity

Max.
8.8m
Hook height (Approx.)
(Above ground level)

Max.
8.41m
Working radius

1850kg
Mass of crane
(Petrol engine model)



Radio remote control

Photo: Standard model

SPECIFICATIONS [with Electric power unit]

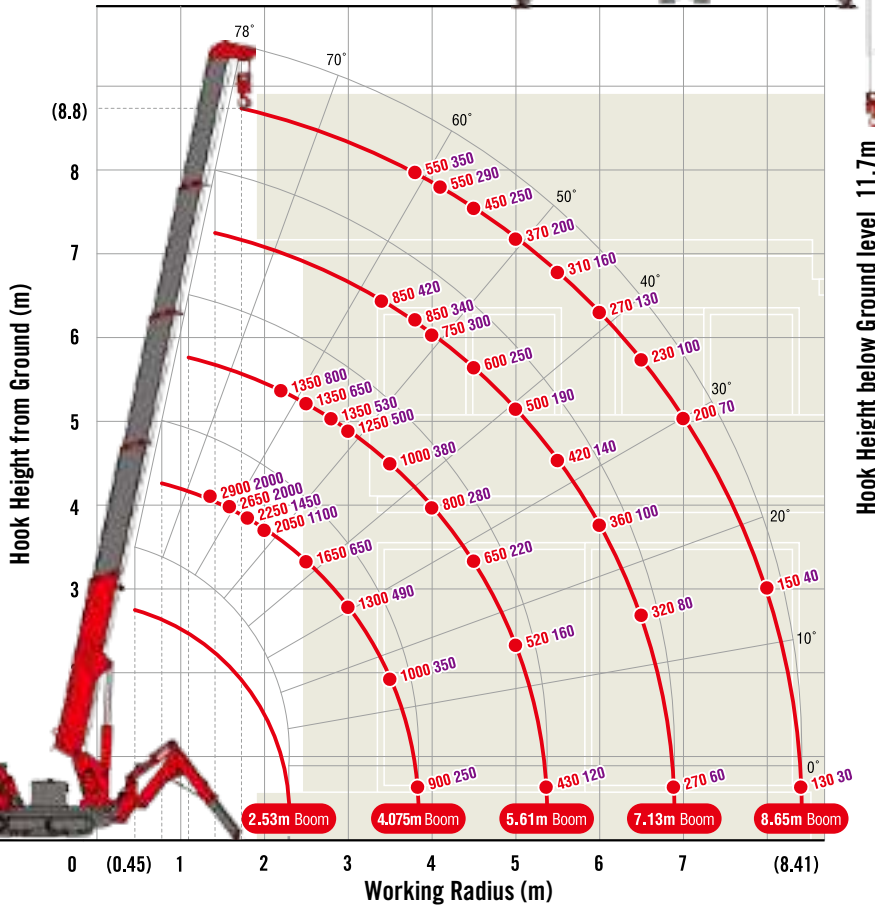
| Crane model | URW295CP2 | | URW295C4 | |
|--|---|--------------------------|---|--------------------------|
| | A (Standard) | E-1(Safe load indicator) | A (Standard) | E-1(Safe load indicator) |
| Lifting capacity | Max. 2.93t at 1.4m | | | |
| Working radius | Min. 0.45m, Max. 8.41m | | | |
| Hook height (Approx.) | Above ground level Max. 8.8m | | | |
| | Below ground level Max. 11.7m (with 4-part line) | | | |
| Boom | Length Min. 2.53m to Max. 8.65m | | Min. 2.53m to Max. 8.65m Min. 2.70m to Max. 8.65m | |
| | Extending speed 6.12m / 20 sec. [50Hz] 6.12m / 34 sec. [60Hz] 6.12m / 28 sec. | | 6.12m / 22 sec. 5.95m / 21 sec. [50Hz] 5.95m / 33 sec. [60Hz] 5.95m / 28 sec. | |
| | Raising angle / speed 0° to 78° / 11 sec. [50Hz] 0° to 78° / 18 sec. [60Hz] 0° to 78° / 15 sec. | | 0° to 78° / 12 sec. [50Hz] 0° to 78° / 18 sec. [60Hz] 0° to 78° / 15 sec. | |
| Structure | 5-section box beam type telescoping boom | | | |
| Winch | Single line speed 40 m/min (at 4th layer) [50Hz] 22 m/min (at 4th layer) [60Hz] 27 m/min (at 4th layer) | | | |
| | Hook speed 10 m/min (at 4th layer with 4-part line) [50Hz] 5.5 m/min (at 4th layer with 4-part line) [60Hz] 6.7 m/min (at 4th layer with 4-part line) | | | |
| | Wire rope Construction : IWRC 6 x WS(26) GRADE B / Diameter x Length : 8mm x 54m / Breaking strength : 42.4kN [4320 kgf] | | | |
| | Hook block 2.9t capacity, 2 sheaves with safety latch | | | |
| Stewing | Range 360° continuous rotation on a ball bearing race | | | |
| | Speed 1.5 rpm | | | |
| Outriggers | 2-section (with damper) for bend and 5-section extension(front) / 4-section extension(rear). Double acting hydraulic cylinders with pilot-operated check valves, direct pushing type (Directly connected with hydraulic automatic lock device) | | | |
| Hydraulic Pump | Type Variable delivery piston pump | | | |
| | Rated pressure For crawling: 21.6 MPa [220 kgf/cm ²] For crane: 20.6 MPa [210 kgf/cm ²] | | | |
| Hydraulic oil tank capacity | 27 liters | | | |
| Safety devices [with Safe load indicator] | Pressure relief valve for hydraulic circuit / Counterbalance valves for boom raising and boom telescoping cylinders / Double pilot-operated check valves for outrigger cylinders / Boom angle indicator with load indicator / Hook safety latch / Automatic mechanical brake for winch / Automatic stop for overwinding / Overwinding alarm / Emergency stop button / Inter-lock device of crane and crawling levers / Level / Stewing restriction limit switch / Turn over prevention device* / Load meter* / Safe load indicator / Inter-lock device of crane and outriggers / Outrigger ground contact detector / Three colored lamp / Headlight | | | |

* Only for standard model

MINI CRAWLER CRANE

WORKING RANGE & NET RATED LOADS (kg)

Outrigger ● Max-extended NOT max-extended



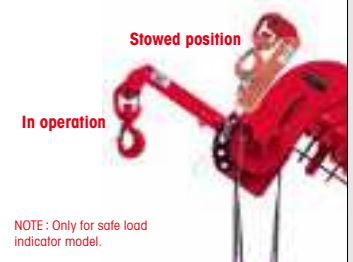
with Electric power unit (Option)



| | |
|-------------|-------------------------------|
| Rated power | 3.7kW (3-phase 4 poles) |
| Voltage | AC 200V or 400V (50Hz / 60Hz) |

*No cable included.

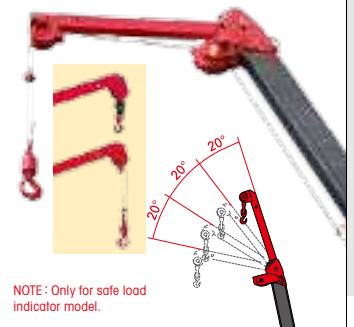
Searcher hook assembly (Option)



NOTE: Only for safe load indicator model.

| | |
|------------------|-------------------|
| Length | 500mm |
| Lifting capacity | Max. 300kg |
| Tilt angles | 0°, 20°, 40°, 60° |

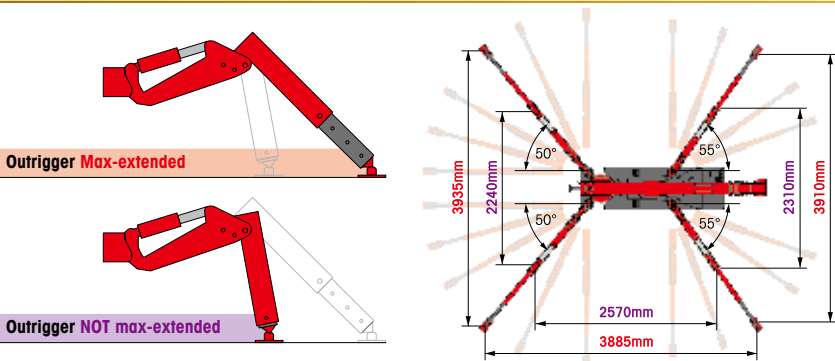
Fly jib assembly (Option)



NOTE: Only for safe load indicator model.

| | |
|------------------|-------------------|
| Length | 1.5m |
| Lifting capacity | Max. 710kg |
| Tilt angles | 0°, 20°, 40°, 60° |

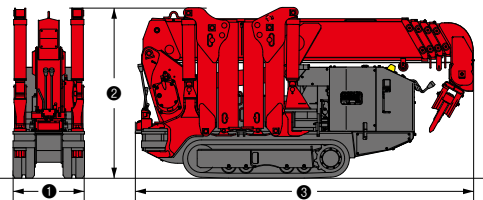
OUTRIGGER POSITIONS



CRAWLING GEAR [with Electric power unit]

| Crane model | URW295CP2 | URW295C4 |
|-----------------------------|--|--|
| Crawling speed | 0~2.3 km/h, forward / backward [AC200V 50Hz] 0~1.2 km/h [AC200V 60Hz] 0~1.4 km/h [AC400V 50Hz] 0~1.1 km/h [AC400V 60Hz] 0~1.3 km/h | 0~2 km/h, forward / backward [AC200V 50Hz] 0~1.2 km/h [AC200V 60Hz] 0~1.4 km/h [AC400V 50Hz] 0~1.1 km/h [AC400V 60Hz] 0~1.3 km/h |
| Hill climbing ability | 20° | 20° |
| Tread length × width | 1050mm × 180mm | 1050mm × 180mm |
| Ground contact pressure | 48.0 kPa [0.49 kgf/cm ²] 51.4 kPa [0.52 kgf/cm ²] | 49.8 kPa [0.51 kgf/cm ²] 53.0 kPa [0.54 kgf/cm ²] |
| Engine manufacturer / model | Mitsubishi / GB400LE | Kubota / Z482-E4B |
| Displacement | 391cc | 479cc |
| Maximum output | 6.6kW(9PS) / 1800 rpm, Rated output | 7.2kW(9.8PS) / 2600 rpm, Rated output |
| Fuel | Petrol | Diesel |
| Fuel tank capacity | 6 liters | 10 liters |
| Steering | Hydraulic drive independent of left / right | Hydraulic drive independent of left / right |

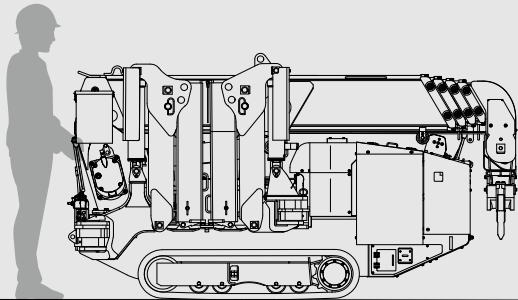
DIMENSIONS [with Electric power unit]



| Crane model | URW295CP2 | URW295C4 |
|----------------|-----------------|-----------------|
| ① Total width | 600mm | |
| ② Total height | 1375mm [1430mm] | 1380mm [1450mm] |
| ③ Total length | 2690mm | 2730mm [2900mm] |
| Mass of crane | 1850kg [1980kg] | 1920kg [2040kg] |

URW295CB2(ECO)

URW295CB2(ECO) is environment friendly model driven by a large-capacity battery without CO² emission during operation.



Max.
8.9m
Hook height (Approx.)
(Above ground level)

Continuous operating time

270 min (Standard)

240 min (High speed)

Charging time

5 hour (80%)

10 hour (100%)

Max.
8.41m
Working radius

Max.
**2.93t
x1.4m**
Lifting capacity

2350kg
Mass of crane



Radio remote control

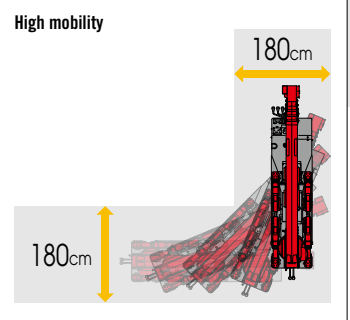
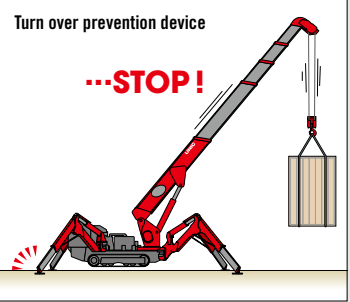
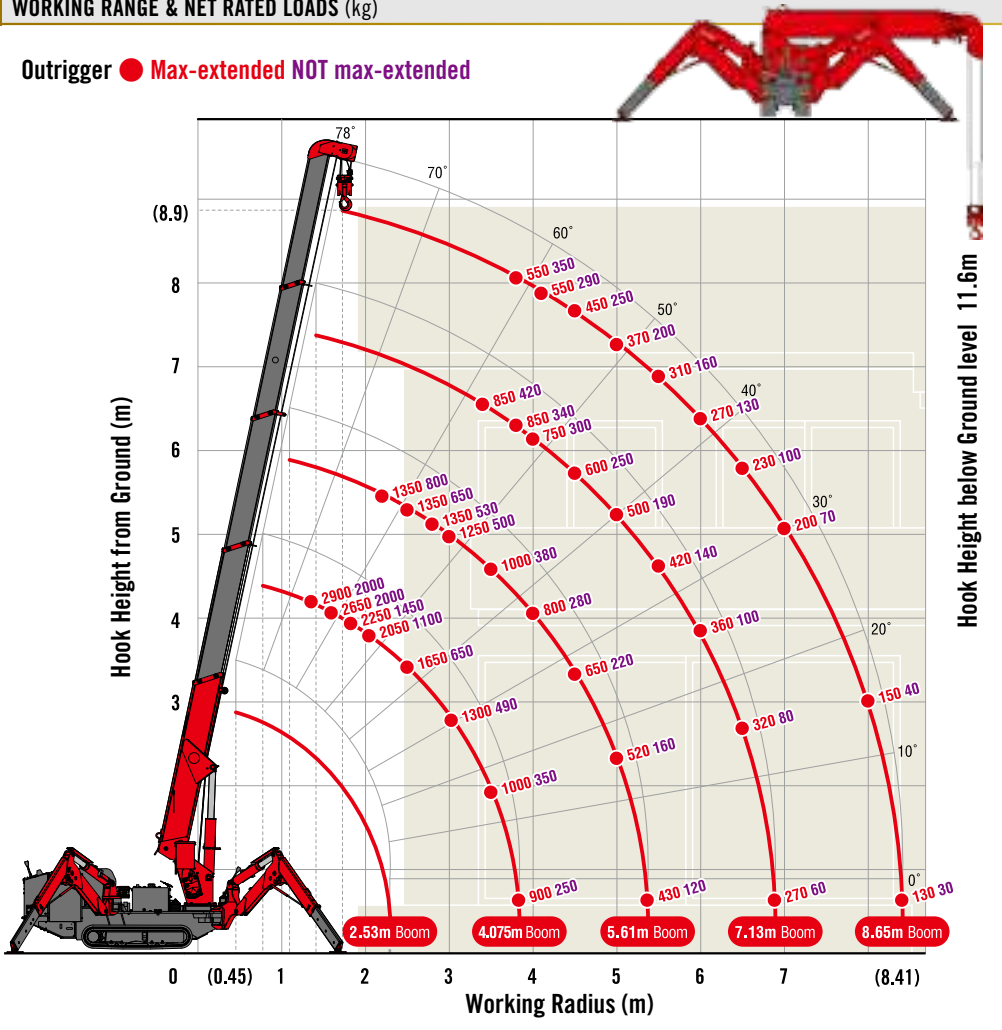
SPECIFICATIONS

| Crane model | URW295CB2A | |
|-----------------------|--|--|
| Lifting capacity | Max. 2.93t at 1.4m | |
| Working radius | Min 0.45m, Max 8.41m | |
| Hook height (Approx.) | Above ground level | |
| | Below ground level | |
| Boom | Max. 8.9m | |
| | Length | Max. 11.6m (with 4-part line) |
| | Extending speed | Min 2.53m, Max 8.65m |
| | Raising angle / speed | 6.12m/31s (Standard) 6.12m/23s (High speed) |
| | Structure | 0° to 78°/17s (Standard) 0° to 78°/12s (High speed) |
| Winch | 5-section box beam type telescoping boom | |
| | Single line speed | 28m/min (at 4th layer) (Standard) 36.4m/min (at 4th layer) (High speed) |
| | Hook speed | 7m/min (at 4th layer with 4-part line) (Standard) 9.1m/min (at 4th layer with 4-part line) (High speed) |
| | Wire rope | Construction : IWRC 6 x WS(26) GRADE B / Diameter x Length : 8mm x 54m / Breaking strength : 42.4kN [4320kgf] |
| Slewing | Hook block | |
| | Speed | 2.9t capacity, 2 sheaves with safety latch |
| Outriggers | Range | 360° continuous rotation on a ball bearing race |
| | Type | 1.0 rpm (Standard) 1.5 rpm (High speed) |
| Hydraulic Pump | Rated pressure | 2-section (with damper) for bend and 5-section extension(front) / 4-section extension(rear). Double acting hydraulic cylinders with pilot-operated check valves, direct pushing type (Directly connected with hydraulic automatic lock device) |
| | Hydraulic oil tank capacity | Gear pump |
| Safety devices | Rated pressure | For crawling: 21.6 MPa [220 kgf/cm ²] For crane: 20.6 MPa [210 kgf/cm ²] |
| | Rated pressure | 27 liters |
| Safety devices | | Pressure relief valve for hydraulic circuit / Counterbalance valves for boom raising and boom telescoping cylinders / Double pilot-operated check valves for outrigger cylinders / Boom angle indicator with load indicator / Hook safety latch / Automatic mechanical brake for winch / Automatic stop for overwinding / Overwinding alarm / Emergency stop button / Inter-lock device of crane and crawling levers / Level / Slewing restriction limit switch / Turn over prevention device / Load meter |

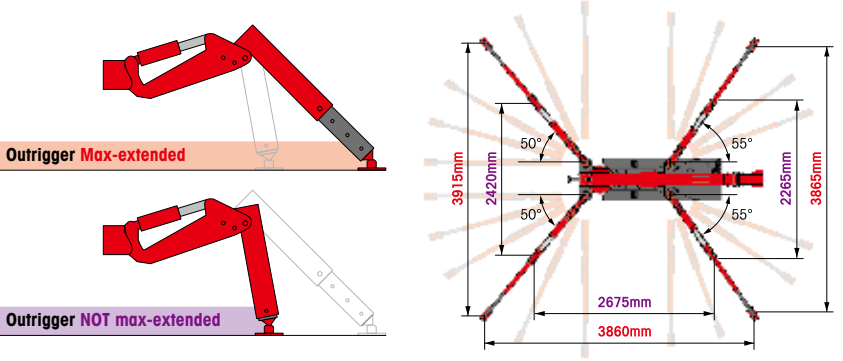
MINI CRAWLER CRANE

WORKING RANGE & NET RATED LOADS (kg)

Outrigger ● Max-extended NOT max-extended



OUTRIGGER POSITIONS



CRAWLING GEAR

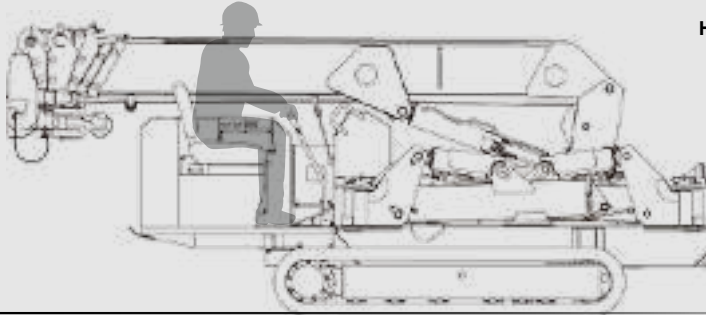
| Crane model | URW295CB2A |
|---------------------------|--|
| Crawling speed | 0~1km/h, forward / backward (Standard) 0~1.6km/h, forward / backward (High speed) |
| Hill climbing ability | 20° |
| Tread length × width | 1050mm × 180mm |
| Ground contact pressure | 60.8kPa [0.62kg/cm ²] |
| Battery type | Flooded lead acid battery |
| Battery model | VC1225 (DC48V-225Ah) (DC2V x 24 cells) |
| Continuous operating time | Approx. 270min (Standard) Approx. 240min (High speed) |
| Input voltage / current | AC200V (50/60Hz), Single-phase / 16A |
| Charging time | Approx. 5 hour (80%) Approx. 10 hour (100%) |

DIMENSIONS

| Crane model | URW295CB2A |
|----------------|------------|
| ① Total width | 690mm |
| ② Total height | 1525mm |
| ③ Total length | 2720mm |
| Mass of crane | 2350kg |

URW376C

URW376C features a six-section hydraulic boom to allow a maximum hook height of 14.9m.



Max.
14.9m
Hook height (Approx.)
(Above ground level)

with Safe load indicator (Option)



Max.
**3.03t
x2.5m**
Lifting capacity

3870kg
Mass of crane

Max.
14.45m
Working radius



Radio
remote
control

Photo:Standard model

SPECIFICATIONS [with Electric power unit]

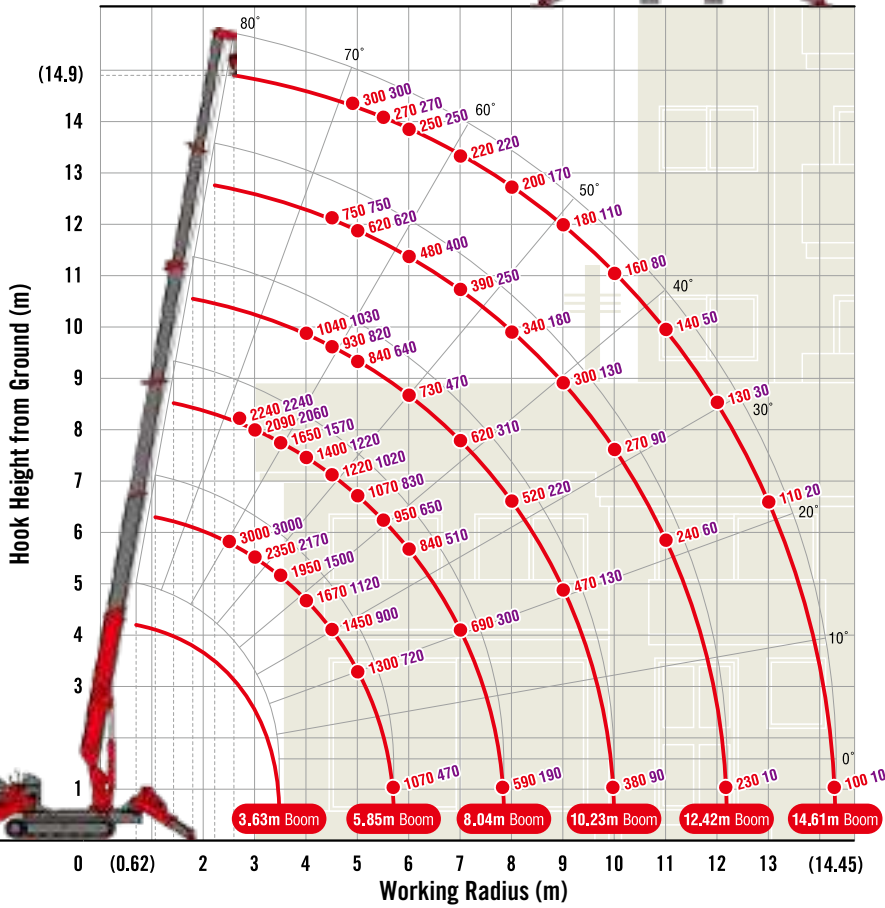
| Crane model | URW376C4 | |
|--|--|--|
| | A (Standard) | E-1(Safe load indicator) |
| Lifting capacity | Max. 3.03t at 2.5m | |
| Working radius | Min. 0.62m, Max. 14.45m | |
| Hook height (Approx.) | Above ground level | Max. 14.9m |
| | Below ground level | Max. 18.7m (with 4-part line) |
| Boom | Length | Min. 3.63m to Max. 14.61m |
| | Extending speed | 10.98m / 23 sec. [50Hz] 10.98m / 40 sec. [60Hz] 10.98m / 33.5 sec. |
| | Raising angle / speed | 0° to 80° / 10 sec. [50Hz] 0° to 80° / 18 sec. [60Hz] 0° to 80° / 15 sec. |
| Structure | 6-section box beam type telescoping boom | |
| Winch | Single line speed | 68 m/min (at 4th layer) [50Hz] 34 m/min (at 4th layer) [60Hz] 40 m/min (at 4th layer) |
| | Hook speed | 17 m/min (at 4th layer with 4-part line) [50Hz] 8.5 m/min (at 4th layer with 4-part line) [60Hz] 10 m/min (at 4th layer with 4-part line) |
| | Wire rope | Construction : IWRC 6 x WS(26) GRADE B / Diameter x Length : 8mm x 85m / Breaking strength : 42.4kN [4320 kgf] |
| Stewling | Hook block | 3t capacity, 2 sheaves with safety latch |
| | Range | 360° continuous rotation on a ball bearing race |
| Outriggers | Speed | 2.5 rpm [50Hz] 2.1 rpm [60Hz] 2.5 rpm |
| | Horizontal, Vertical | A double acting hydraulic cylinder, direct pushing type (Directly connected with hydraulic automatic lock device) |
| Hydraulic pump | Type | Variable delivery piston pump |
| | Rated pressure | For crawling: 21.6 MPa [220 kgf/cm ²] For crane: 20.6 MPa [210 kgf/cm ²] |
| Hydraulic oil tank capacity | 75 liters | |
| Safety devices [with Safe load indicator] | Pressure relief valve for hydraulic circuit / Counterbalance valves for boom raising and boom telescoping cylinders / Pilot-operated check valves for outrigger cylinders (Horizontal) / Double pilot-operated check valves for outrigger cylinders (Vertical) / Boom angle indicator with load indicator / Hook safety latch / Automatic mechanical brake for winch / Automatic stop for overwinding / Overwinding alarm / Automatic stop for leaving minimum wire rope / Emergency stop button / Inter-lock device of crane and crawling levers / Level / Three colored lamp / Headlight / Digital load meter* / Automatic stop for overloading* / Safe load indicator / Inter-lock device of crane and outriggers / Outrigger ground contact detector | |

* Only for standard model

MINI CRAWLER CRANE

WORKING RANGE & NET RATED LOADS (kg)

Outrigger ● Max-extended NOT max-extended



Hook Height below Ground level 18.7m

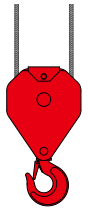
with Electric power unit (Option)



| | |
|-------------|-------------------------------|
| Rated power | 7.5kW (3-phase 4 poles) |
| Voltage | AC 200V or 400V (50Hz / 60Hz) |

*No cable included.

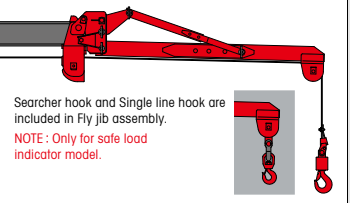
2-part line hook block (Option)



NOTE: Only for safe load indicator model.

| | |
|--------------------------------|--------------------|
| Lifting capacity | Max. 1.52t at 4.5m |
| Hook height below ground level | 38.7m |

Fly jib assembly (Option)

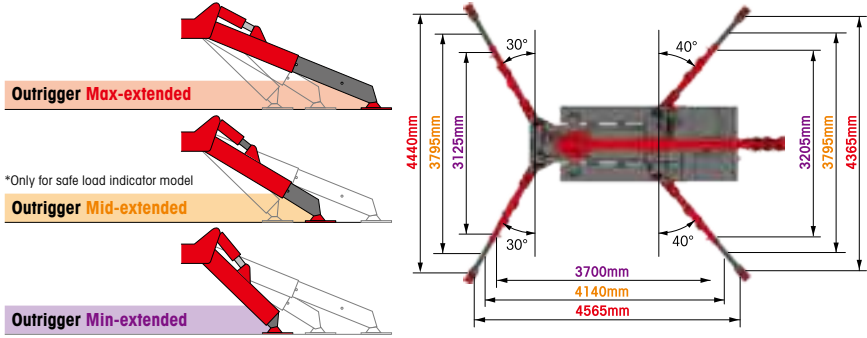


Searcher hook and Single line hook are included in Fly jib assembly.

NOTE: Only for safe load indicator model.

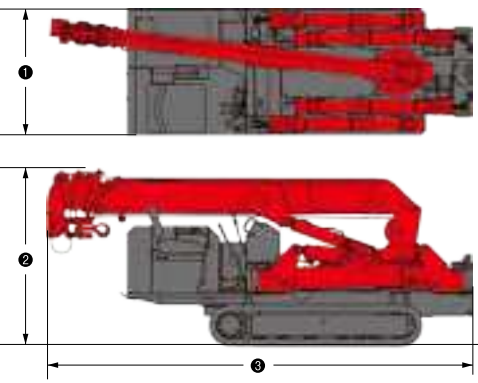
| | |
|------------------|-------------------|
| Length | 2m |
| Lifting capacity | Max. 710kg |
| Tilt angles | 0°, 20°, 40°, 60° |

OUTRIGGER POSITIONS



*Only for safe load indicator model

DIMENSIONS [with Electric power unit]



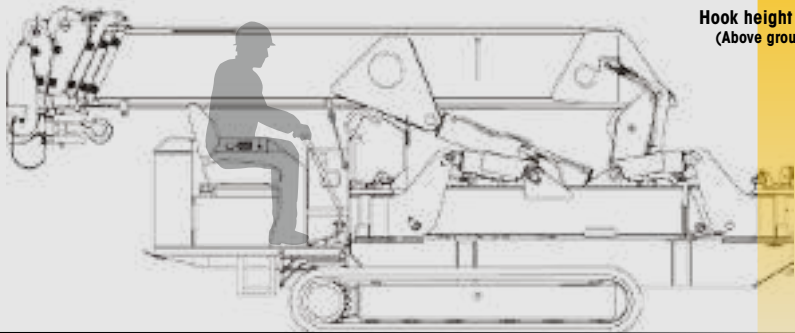
CRAWLING GEAR [with Electric power unit]

| Crane model | URW376C4 |
|-----------------------------|--|
| Crawling speed | 0~3 km/h, forward / backward [50Hz] 0~1.3 km/h [60Hz] 0~1.5 km/h |
| Hill climbing ability | 23° |
| Tread length × width | 1750mm × 300mm |
| Ground contact pressure | 36.3 kPa [0.37 kgf/cm ²] 37.3 kPa [0.38 kgf/cm ²] |
| Engine manufacturer / model | Yanmar / 3TNV80F |
| Displacement | 1266cm ³ |
| Maximum output | 15.2kW(20.7PS) / 2500 rpm, Rated output |
| Fuel | Diesel |
| Fuel tank capacity | 40 liters |
| Steering | Hydraulic drive independent of left / right |

| Crane model | URW376C4 |
|----------------|-----------------|
| ① Total width | 1300mm |
| ② Total height | 1805mm |
| ③ Total length | 4340mm |
| Mass of crane | 3870kg [4020kg] |

URW546C

URW546C features maximum 4.05t lifting power to allow heavy load lifting operation.



Max.
16m
Hook height (Approx.)
(Above ground level)

with Safe load indicator (Option)



Max.
4.05t
x2.5m
Lifting capacity

4930kg
Mass of crane

Max.
15.52m
Working radius



Radio remote control

Photo:Standard model

SPECIFICATIONS [with Electric power unit]

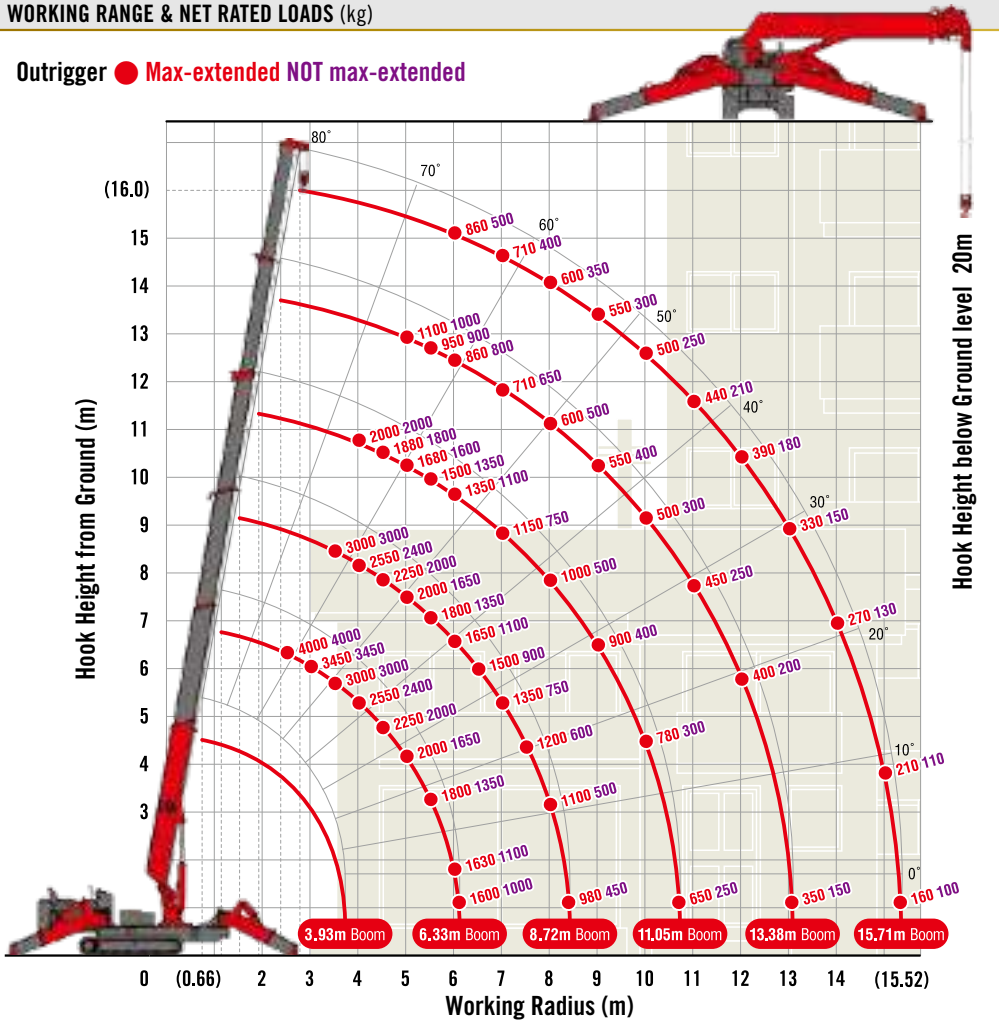
| Crane model | URW546C4 | |
|--|--|---|
| | A (Standard) | E-1(Safe load indicator) |
| Lifting capacity | Max. 4.05t at 2.5m | |
| Working radius | Min. 0.66m, Max. 15.52m | |
| Hook height (Approx.) | Above ground level | Max. 16m |
| | Below ground level | Max. 20m with 4-part line |
| Boom | Length | Min. 3.93m to Max. 15.71m |
| | Extending speed | 11.78m / 35 sec. [50Hz] 11.78m / 57 sec. [60Hz] 11.78m / 48 sec. |
| | Raising angle / speed | 0° to 80° / 18 sec. [50Hz] 0° to 80° / 30 sec. [60Hz] 0° to 80° / 25 sec. |
| | Structure | 6-section box beam type telescoping boom |
| Winch | Single line speed | 44 m/min (at 4th layer) [50Hz] 22 m/min (at 4th layer) [60Hz] 26 m/min (at 4th layer) |
| | Hook speed | 11 m/min (at 4th layer with 4-part line) [50Hz] 5.5 m/min (at 4th layer with 4-part line) [60Hz] 6.5 m/min (at 4th layer with 4-part line) |
| | Wire rope [with Safe load indicator] | Construction : XP IWRC 6 x WS(26) / Diameter x Length : 8mm x 91.5m / Breaking strength : 47.1kN [4800 kgf] Construction : IWRC L6 x P-WS(26) / Diameter x Length : 8mm x 91.5m / Breaking strength : 53.0kN [5400kgf] |
| | Hook block | 4t capacity, 2 sheaves with safety latch |
| Stewing | Range | 360° continuous rotation on a ball bearing race |
| | Speed | 2.5 rpm [50Hz] 2.0 rpm [60Hz] 2.3 rpm |
| Outriggers | Horizontal, Vertical | A double acting hydraulic cylinder, direct pushing type (Directly connected with hydraulic automatic lock device) |
| Hydraulic pump | Type | Variable delivery piston pump |
| | Rated pressure | For crawling: 21.6 MPa [220 kgf/cm ²] For crane: 20.6 MPa [210 kgf/cm ²] |
| Hydraulic oil tank capacity | 75 liters | |
| Safety devices [with Safe load indicator] | Pressure relief valve for hydraulic circuit / Counterbalance valves for boom raising and boom telescoping cylinders / Pilot-operated check valves for outrigger cylinders (Horizontal) / Double pilot-operated check valves for outrigger cylinders (Vertical) / Boom angle indicator with load indicator / Hook safety latch / Automatic mechanical brake for winch / Automatic stop for overwinding / Overwinding alarm / Automatic stop for leaving minimum wire rope / Emergency stop button / Inter-lock device of crane and crawling levers / Level / Three colored lamp / Headlight / Digital load meter* / Automatic stop for overloading* / Safe load indicator / Inter-lock device of crane and outriggers / Outrigger ground contact detector | |

* Only for standard model

MINI CRAWLER CRANE

WORKING RANGE & NET RATED LOADS (kg)

Outrigger ● Max-extended NOT max-extended



with Electric power unit (Option)



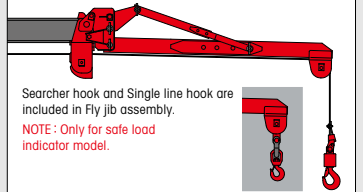
| | |
|-------------|-------------------------------|
| Rated power | 7.5kW (3-phase 4 poles) |
| Voltage | AC 200V or 400V (50Hz / 60Hz) |

*No cable included.

Three colored lamp



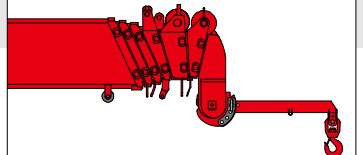
Fly jib assembly (Option)



Searcher hook and Single line hook are included in Fly jib assembly.
NOTE: Only for safe load indicator model.

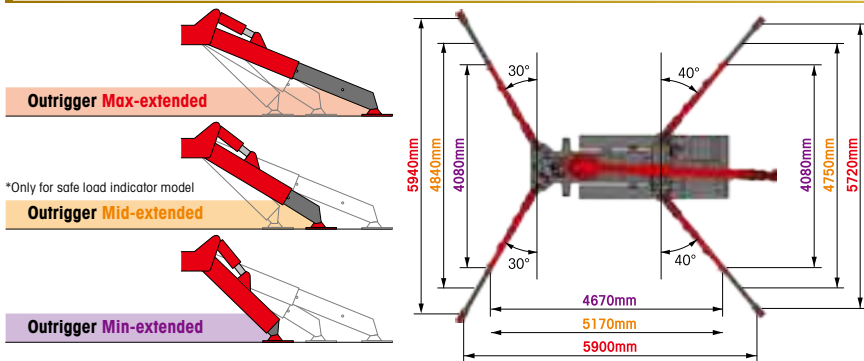
| | |
|------------------|-------------------|
| Length | 2m |
| Lifting capacity | Max. 710kg |
| Tilt angles | 0°, 20°, 40°, 60° |

Searcher hook assembly (Option)



| | |
|------------------|-------------------|
| Length | 800mm |
| Lifting capacity | Max. 500kg |
| Tilt angles | 0°, 20°, 40°, 60° |

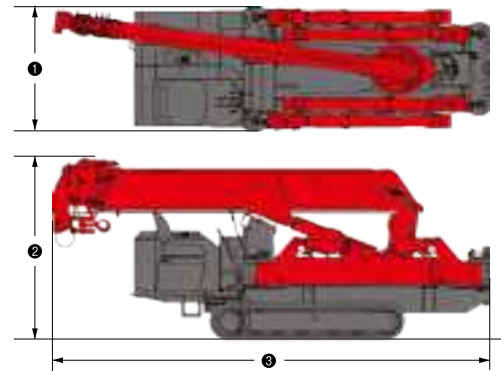
OUTRIGGER POSITIONS



CRAWLING GEAR [with Electric power unit]

| Crane model | URW546C4 |
|-----------------------------|--|
| Crawling speed | 0~3 km/h, forward / backward [50Hz] 0~1.3 km/h [60Hz] 0~1.5 km/h |
| Hill climbing ability | 23° |
| Tread length × width | 1750mm × 300mm |
| Ground contact pressure | 46.1 kPa [0.47 kgf/cm ²] 47.1 kPa [0.48 kgf/cm ²] |
| Engine manufacturer / model | Yanmar / 3TNV80F |
| Displacement | 1266cc |
| Maximum output | 15.2kW(20.7PS) / 2500 rpm, Rated output |
| Fuel | Diesel |
| Fuel tank capacity | 40 liters |
| Steering | Hydraulic drive independent of left / right |

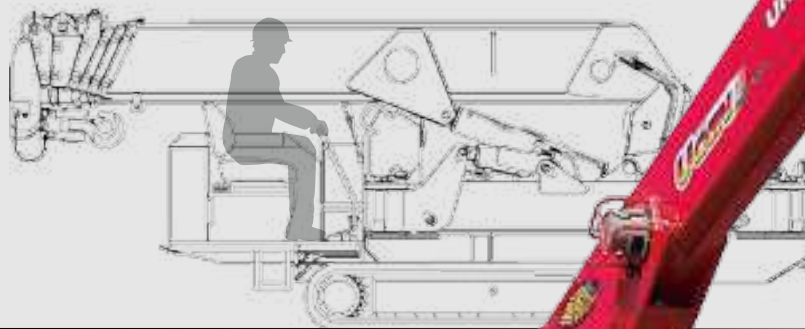
DIMENSIONS [with Electric power unit]



| Crane model | URW546C4 |
|----------------|-----------------|
| ① Total width | 1380mm |
| ② Total height | 2035mm |
| ③ Total length | 4870mm |
| Mass of crane | 4930kg [5080kg] |

URW547C

URW547C provides maximum hook height of 18.2m with its seven section hydraulic boom.



with Safe load indicator (Option)



Max.
18.2m
Hook height (Approx.)
(Above ground level)

Max.
**4.05t
x2.5m**
Lifting capacity

Max.
17.83m
Working radius

5020kg
Mass of crane

Radio
remote
control

Photo: Standard model

SPECIFICATIONS [with Electric power unit]

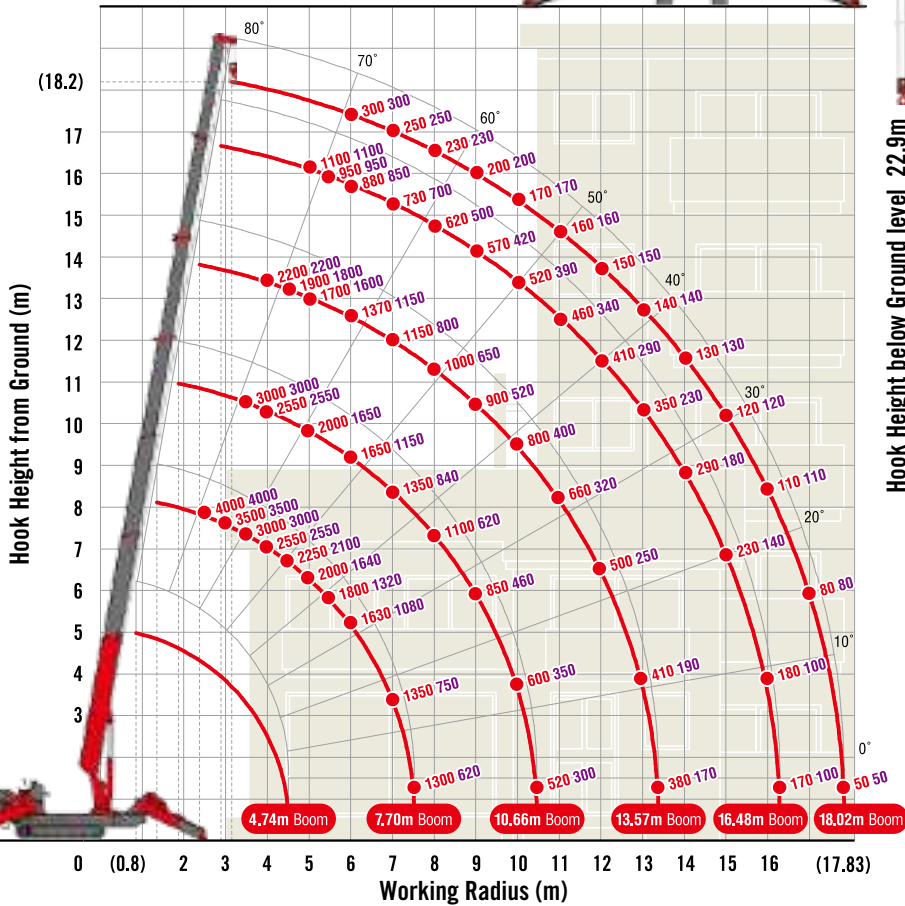
| Crane model | URW547C4 | |
|--|--|--|
| | A (Standard) | E-1(Safe load indicator) |
| Lifting capacity | Max. 4.05t at 2.5m | |
| Working radius | Min. 0.8m, Max. 17.83m | |
| Hook height (Approx.) | Above ground level | Max. 18.2m |
| | Below ground level | Max. 22.9m (with 4-part line) |
| Boom | Length | Min. 3.99m to Max. 18.02m |
| | Extending speed | 14.03m / 35 sec. [50Hz] 14.03m / 57 sec. [60Hz] 14.03m / 48 sec. |
| | Raising angle / speed | 0° to 80° / 18 sec. [50Hz] 0° to 80° / 30 sec. [60Hz] 0° to 80° / 25 sec. |
| | Structure | 7-section box beam type telescoping boom |
| Winch | Single line speed | 56 m/min (at 5th layer) [50Hz] 28 m/min (at 5th layer) [60Hz] 32.8 m/min (at 5th layer) |
| | Hook speed | 14 m/min (at 5th layer with 4-part line) [50Hz] 7m/min (at 5th layer with 4-part line) [60Hz] 8.2 m/min (at 5th layer with 4-part line) |
| | Wire rope | Construction : IWRC L6 x P-WS(26) / Diameter x Length : 8mm x 103m / Breaking strength : 53kN [5400 kgf] |
| | Hook block | 4t capacity, 2 sheaves with safety latch |
| Stewing | Range | 360° continuous rotation on a ball bearing race |
| | Speed | 2.5 rpm [50Hz] 2.0 rpm [60Hz] 2.3 rpm |
| Outriggers | Horizontal, Vertical A double acting hydraulic cylinder, direct pushing type (Directly connected with hydraulic automatic lock device) | |
| Hydraulic pump | Type | Variable delivery piston pump |
| | Rated pressure | For crawling: 21.6 MPa [220 kgf/cm ²] For crane: 20.6 MPa [210 kgf/cm ²] |
| Hydraulic oil tank capacity | 75 liters | |
| Safety devices [with Safe load indicator] | Pressure relief valve for hydraulic circuit / Counterbalance valves for boom raising and boom telescoping cylinders / Pilot-operated check valves for outrigger cylinders (Horizontal) / Double pilot-operated check valves for outrigger cylinders (Vertical) / Boom angle indicator with load indicator / Hook safety latch / Automatic mechanical brake for winch / Automatic stop for overwinding / Overwinding alarm / Automatic stop for leaving minimum wire rope / Emergency stop button / Inter-lock device of crane and crawling levers / Level / Three colored lamp / Headlight / Digital load meter* / Automatic stop for overloading* / Safe load indicator / Inter-lock device of crane and outriggers / Outrigger ground contact detector | |

* Only for standard model

MINI CRAWLER CRANE

WORKING RANGE & NET RATED LOADS (kg)

Outrigger ● Max-extended NOT max-extended



Hook Height below Ground level 22.9m

with Electric power unit (Option)



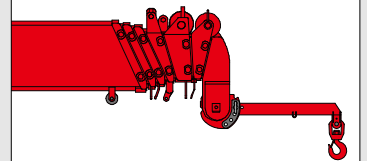
| | |
|-------------|-------------------------------|
| Rated power | 7.5kW (3-phase 4 poles) |
| Voltage | AC 200V or 400V (50Hz / 60Hz) |

*No cable included.

Three colored lamp



Searcher hook assembly (Option)



NOTE: Only for safe load indicator model.

| | |
|------------------|-------------------|
| Length | 800mm |
| Lifting capacity | Max. 500kg |
| Tilt angles | 0°, 20°, 40°, 60° |

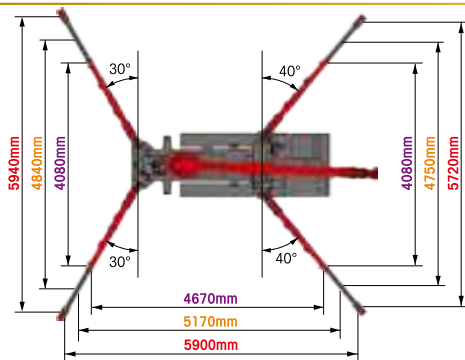
OUTRIGGER POSITIONS

Outrigger Max-extended

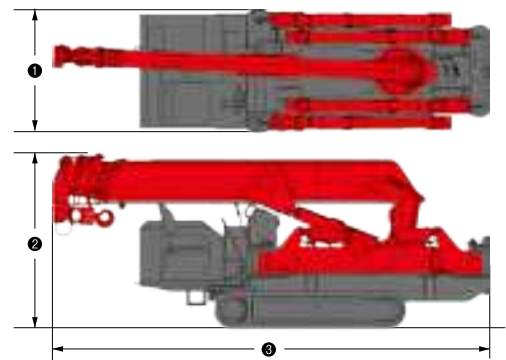
Outrigger Mid-extended

Outrigger Min-extended

*Only for safe load indicator model



DIMENSIONS [with Electric power unit]



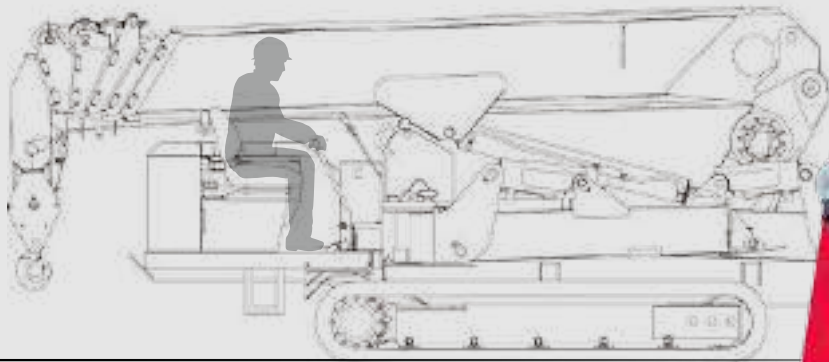
CRAWLING GEAR [with Electric power unit]

| Crane model | URW547C4 |
|-----------------------------|--|
| Crawling speed | 0~3 km/h, forward / backward [50Hz] 0~1.3 km/h [60Hz] 0~1.5 km/h |
| Hill climbing ability | 23° |
| Tread length × width | 1750mm × 300mm |
| Ground contact pressure | 47.1 kPa [0.48 kgf/cm ²] 49.0 kPa [0.50 kgf/cm ²] |
| Engine manufacturer / model | Yanmar / 3TNV80F |
| Displacement | 1266cc |
| Maximum output | 15.2kW(20.7PS) / 2500 rpm, Rated output |
| Fuel | Diesel |
| Fuel tank capacity | 40 liters |
| Steering | Hydraulic drive independent of left / right |

| Crane model | URW547C4 |
|----------------|-----------------|
| ① Total width | 1380mm |
| ② Total height | 1980mm |
| ③ Total length | 4950mm |
| Mass of crane | 5070kg [5220kg] |

URW706C

URW706C features maximum hook height of 19.5m with its six section hydraulic boom.



with Safe load indicator (Option)

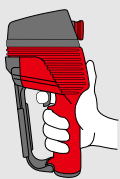


Max.
19.5m
Hook height (Approx.)
(Above ground level)

Max.
18.6m
Working radius

Max.
6.05t
x3.0m
Lifting capacity

7990kg
Mass of crane



Radio remote control

Photo:Standard model

SPECIFICATIONS [with Electric power unit]

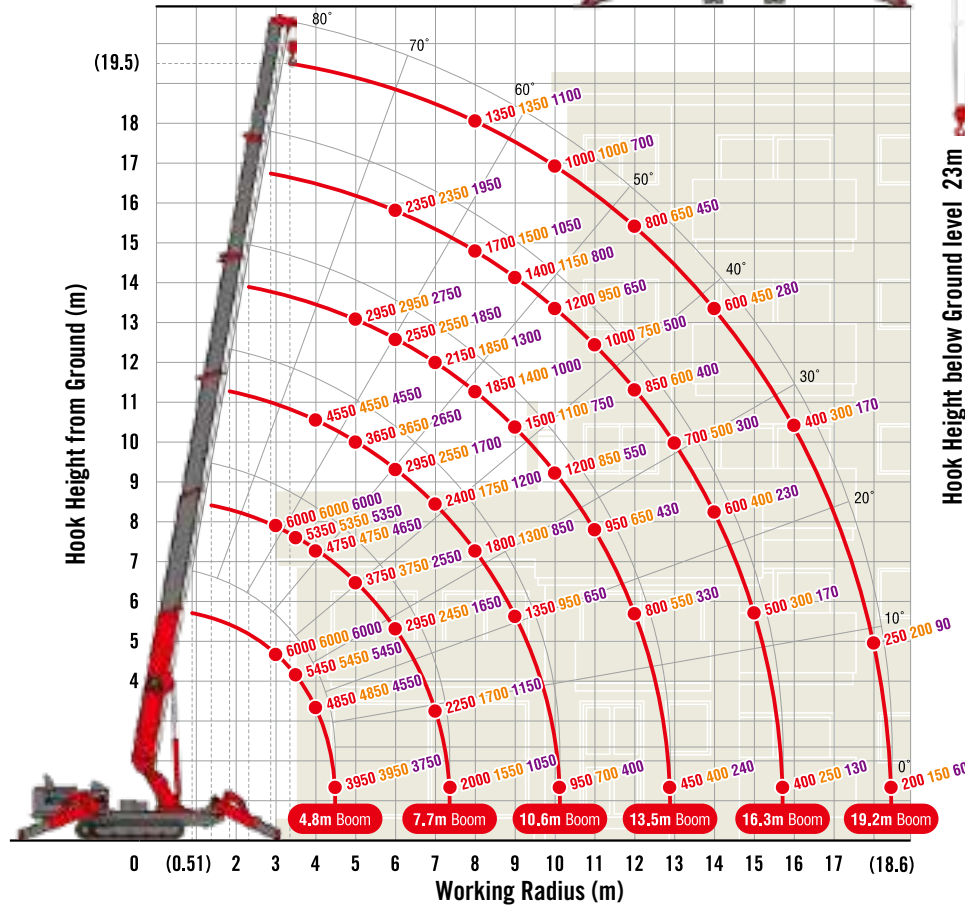
| Crane model | URW706C4 | |
|--|---|---|
| | A (Standard) | E-1(Safe load indicator) |
| Lifting capacity | Max. 6.05t at 3m | |
| Working radius | Min. 0.51m, Max. 18.6m | |
| Hook height (Approx.) | Above ground level | Max. 19.5m |
| | Below ground level | Max. 23m (with 4-part line) |
| Boom | Length | Min. 4.8m to Max. 19.2m |
| | Extending speed | 14.4m / 52 sec. [50Hz] 14.4m / 110 sec. [60Hz] 14.4m / 90 sec. |
| | Raising angle / speed | 0° to 80° / 16 sec. [50Hz] 0° to 80° / 45 sec. [60Hz] 0° to 80° / 37 sec. |
| | Structure | 6-section box beam type telescoping boom |
| Winch | Single line speed | 44 m/min (at 4th layer) [50Hz] 15.6 m/min (at 4th layer) [60Hz] 17.7 m/min (at 4th layer) |
| | Hook speed | 11 m/min (at 4th layer with 4-part line) [50Hz] 3.9 m/min (at 4th layer with 4-part line) [60Hz] 4.4 m/min (at 4th layer with 4-part line) |
| | Wire rope | Construction : IWRC 6 x Fi(29) / Diameter x Length : 10mm x 111m / Breaking strength : 78.4kN (8000 kgf) |
| | Hook block | 6t capacity, 2 sheaves with safety latch |
| Stewing | Range | 360° continuous rotation on a ball bearing race |
| | Speed | 2.5 rpm [50Hz] [60Hz] 1.8 rpm |
| Outriggers | Horizontal, Vertical A double acting hydraulic cylinder, direct pushing type (Directly connected with hydraulic automatic lock device) | |
| Hydraulic pump | Type | Variable delivery piston pump |
| | Rated pressure | For crawling:24.5 MPa [250 kgf/cm ²] For crane: 20.6 MPa [210 kgf/cm ²] |
| Hydraulic oil tank capacity | 125.7 liters | |
| Safety devices [with Safe load indicator] | Pressure relief valve for hydraulic circuit / Counterbalance valves for boom raising and boom telescoping cylinders / Pilot-operated check valves for outrigger cylinders (Horizontal) / Double pilot-operated check valves for outrigger cylinders (Vertical) / Boom angle indicator with load indicator / Hook safety latch / Automatic mechanical brake for winch / Automatic stop for overwinding / Overwinding alarm / Automatic stop for leaving minimum wire rope / Emergency stop button / Inter-lock device of crane and crawling levers / Level / Two colored lamp* / Headlight / Automatic stop for overloading* / Safe load indicator / Inter-lock device of crane and outriggers / Outrigger ground contact detector / Three colored lamp | |

* Only for standard model

MINI CRAWLER CRANE

WORKING RANGE & NET RATED LOADS (kg)

Outrigger ● Max-extended Mid-extended Min-extended



Hook Height below Ground level 23m

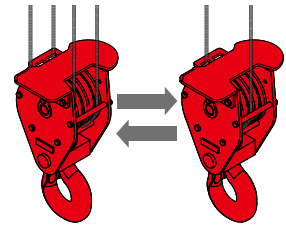
with Electric power unit (Option)



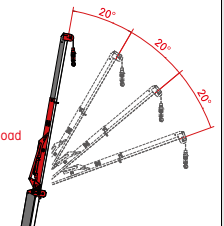
| | |
|-------------|-------------------------------|
| Rated power | 7.5kW (3-phase 4 poles) |
| Voltage | AC 200V or 400V (50Hz / 60Hz) |

*No cable included.

4 - 2 multi-part line hook block (Option)



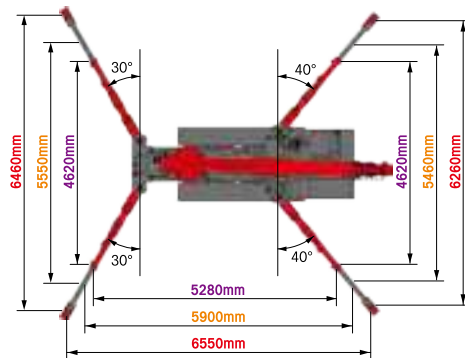
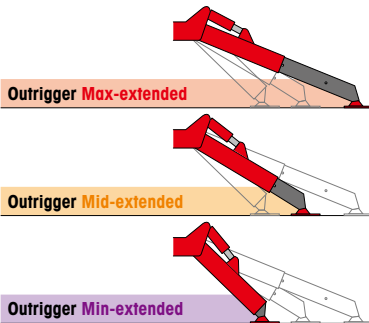
Fly jib assembly (Option)



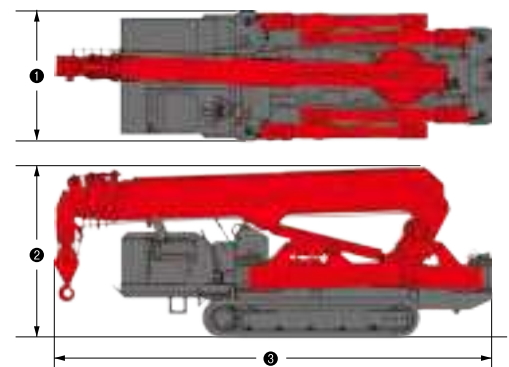
NOTE: Only for safe load indicator model.

| | |
|------------------|--|
| Length | [Manual] Retracted: 2.11m Extended: 3.11m [Hydraulic lift] Retracted: 3.8m Extended: 6.0m |
| Lifting capacity | Max. 820kg |
| Tilt angles | [Manual] 0°, 20°, 40°, 60° [Hydraulic lift] 0° ~ 60° |

OUTRIGGER POSITIONS



DIMENSIONS [with Electric power unit]



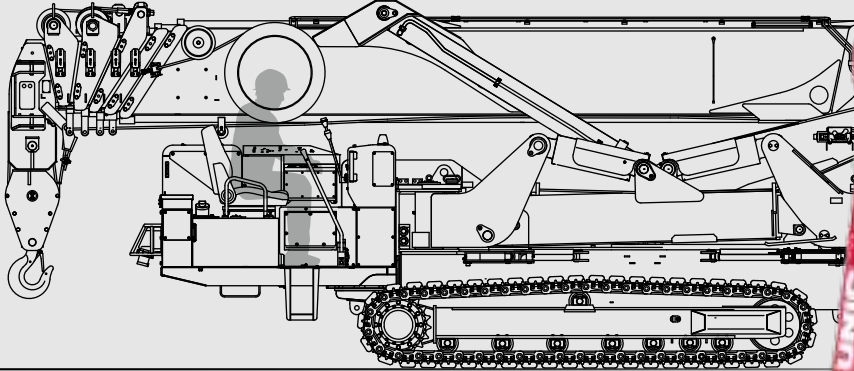
CRAWLING GEAR [with Electric power unit]

| Crane model | URW706C4 |
|-----------------------------|--|
| Crawling speed | 0~2.9 km/h, forward / backward [50Hz] 0~1 km/h [60Hz] 0~1.2 km/h |
| Hill climbing ability | 23° |
| Tread length × width | 2275mm × 400mm |
| Ground contact pressure | 43.1 kPa [0.44 kgf/cm ²] 43.8 kPa [0.45 kgf/cm ²] |
| Engine manufacturer / model | Kubota / D1703-M-DI-E4B |
| Displacement | 1647cc |
| Maximum output | 18.5kW(25.2PS) / 2200 rpm, Rated output |
| Fuel | Diesel |
| Fuel tank capacity | 60 liters |
| Steering | Hydraulic drive independent of left / right |

| Crane model | URW706C4 |
|----------------|-----------------|
| ① Total width | 1670mm |
| ② Total height | 2190mm |
| ③ Total length | 5610mm |
| Mass of crane | 7990kg [8140kg] |

URW1006C

The mightiest mini crawler crane in the world,
URW1006C boasts an unrivalled 10.14t lifting capacity.



with Safe load indicator (Option)



Max.
22.8m
30.7m (with Fly jib assembly)
Hook height (Approx.)
(Above ground level)

Max.
21.93m
24.3m (with Fly jib assembly)
Working radius

Max.
10.14t
x3.0m
Lifting capacity

13840kg
Mass of crane



Radio
remote
control

NOTE : This transmitter is subject to alternation in some countries.
For more information, contact your local UNIC distributor.

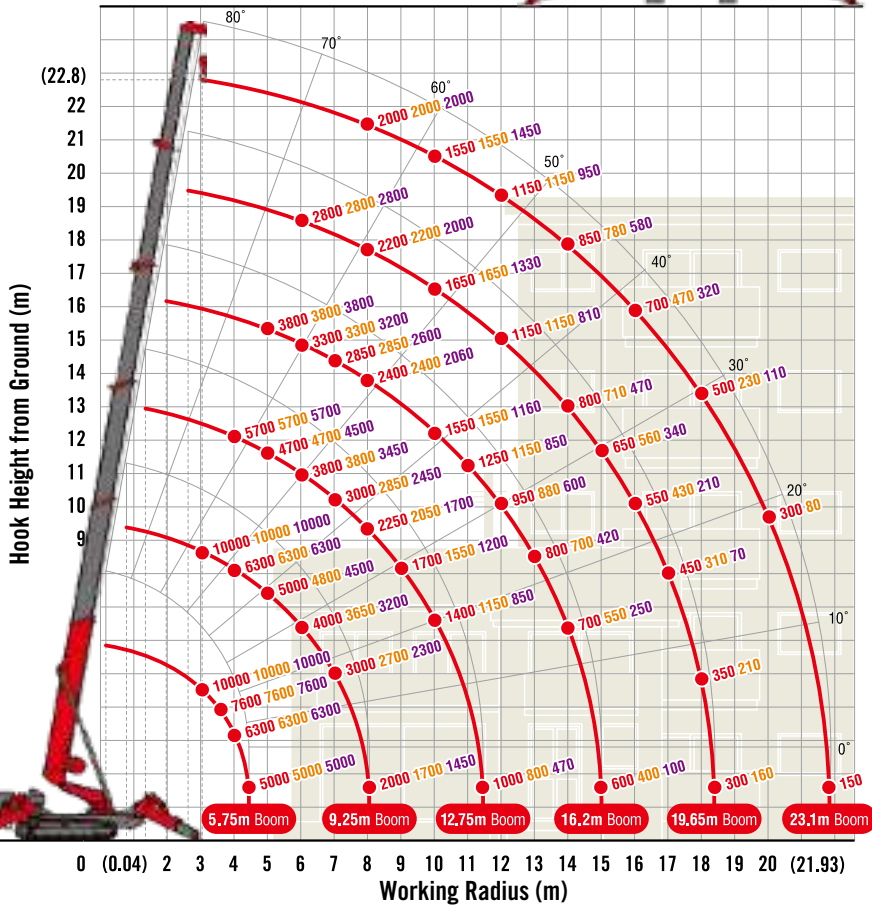
SPECIFICATIONS [with Electric power unit]

| Crane model | URW1006C2E-1 |
|-----------------------------|--|
| Lifting capacity | Max. 10.14t at 3m : with Fly jib assembly Max. 1.05t at 9.7m (boom angle 70° and jib tilt angle 0°) |
| Working radius | Min. 0.04m, Max. 21.93m : with Fly jib assembly Max. 24.3m |
| Hook height (Approx.) | Above ground level Max. 22.8m : with Fly jib assembly Max. 30.7m |
| | Below ground level Max. 30m (with 4-part line) : Max. 128m (with 1-part line) |
| Boom | Length Min. 5.75m to Max. 23.1m |
| | Extending speed 17.35m / 88 sec. [50Hz] 17.35m / 123 sec. [60Hz] 17.35m / 103 sec. |
| | Raising angle / speed 0° to 80° / 44 sec. [50Hz] 0° to 80° / 80 sec. [60Hz] 0° to 80° / 67 sec. |
| | Structure 6-section box beam type telescoping boom |
| Winch | Single line speed 40 m/min (at 4th layer) 2nd: 64 m/min (at 4th layer) [50Hz] 20.8 m/min (at 4th layer) [60Hz] 24.8 m/min (at 4th layer) 2nd: [50Hz] 36 m/min (at 4th layer) [60Hz] 43.2 m/min (at 4th layer) |
| | Hook speed 10 m/min (at 4th layer with 4-part line) 2nd: 16 m/min (at 4th layer with 4-part line) [50Hz] 5.2 m/min (at 4th layer with 4-part line) [60Hz] 6.2 m/min (at 4th layer with 4-part line) 2nd: [50Hz] 9.2 m/min (at 4th layer with 4-part line) [60Hz] 10.8 m/min (at 4th layer with 4-part line) |
| | Wire rope Construction : XP IWRC 6 x WS(31) / Diameter x Length : 13mm x 140m / Breaking strength : 131kN [13400 kgf] |
| Stewing | Hook block 10t capacity, 3 sheaves with safety latch |
| | Range 360° continuous rotation on a ball bearing race |
| Outriggers | Speed 1.3 rpm [50Hz] [60Hz] 1.2 rpm |
| | Horizontal, Vertical / Position A double acting hydraulic cylinder, direct pushing type (Directly connected with hydraulic automatic lock device) / A double acting hydraulic cylinder with link system (Directly connected with hydraulic automatic lock device) |
| Hydraulic pump | Type Variable delivery piston pump |
| | Rated pressure For crawling: 27.5 MPa [280 kgf/cm ²] For crane(except boom raising): 20.6 MPa [210 kgf/cm ²] For boom raising only: 15.7 MPa [160 kgf/cm ²] |
| Hydraulic oil tank capacity | 215 liters |
| Safety devices | Pressure relief valve for hydraulic circuit / Counterbalance valves for boom raising and boom telescoping cylinders / Pilot-operated check valves for outrigger cylinders (Horizontal) / Double pilot-operated check valves for outrigger cylinders (Vertical, Position) / Boom angle indicator with load indicator / Hook safety latch / Automatic mechanical brake for winch / Automatic stop for overwinding / Overwinding alarm / Automatic stop for leaving minimum wire rope / Emergency stop button / Inter-lock device of crane and crawling levers / Inter-lock device of crane and outriggers / Outrigger ground contact detector / Level / Safe load indicator / Three colored lamp / Headlight / Boom outrigger monitor lamp |

MINI CRAWLER CRANE

WORKING RANGE & NET RATED LOADS (kg)

Outrigger ● Max-extended Mid-extended Min-extended



Hook Height below Ground level 30m

with Electric power unit (Option)

| | |
|-------------|-------------------------------|
| Rated power | 11.0kW (3-phase 4 poles) |
| Voltage | AC 400/400-440V (50Hz / 60Hz) |

*No cable included.

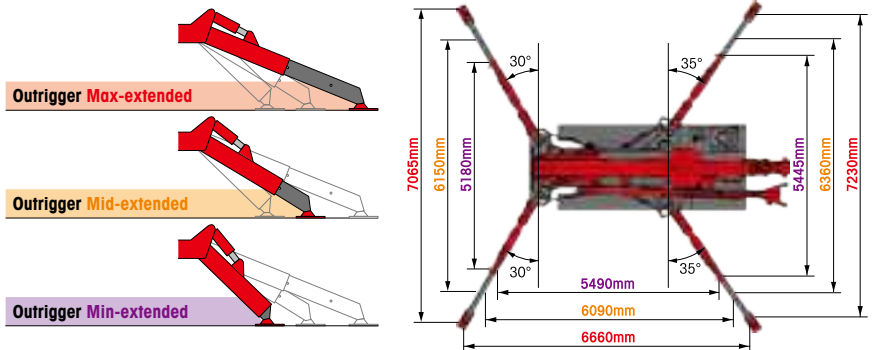
Fly jib assembly

| | |
|------------------|----------------------------------|
| Length | Retracted: 4.73m Extended: 7.87m |
| Lifting capacity | Max. 1050kg |
| Tilt angles | 0° to 60° |

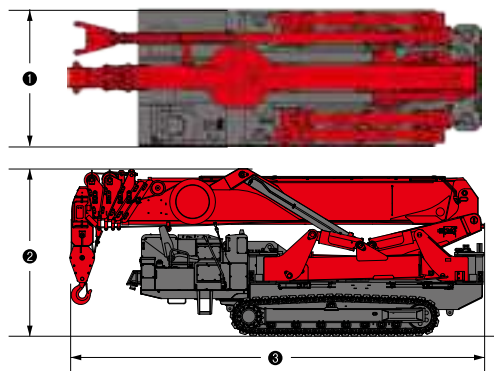
Pick & Carry

| | |
|------------------|---------------------|
| Lifting capacity | 1640kg |
| Working radius | 2.5m |
| Boom length | Boom 1 and 1+2 only |

OUTRIGGER POSITIONS



DIMENSIONS [with Electric power unit]

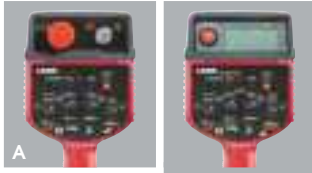


CRAWLING GEAR [with Electric power unit]

| Crane model | URW1006C2E-1 |
|-----------------------------|--|
| Crawling speed | 0~2.6 km/h, forward / backward [50Hz] 0~1.3 km/h [60Hz] 0~1.5 km/h |
| Hill climbing ability | 23° |
| Tread length × width | 2515mm × 400mm |
| Ground contact pressure | 67.3 kPa [0.69 kgf/cm ²] 68.2 kPa [0.70 kgf/cm ²] |
| Engine manufacturer / model | Yanmar / 4TNV88 |
| Displacement | 2189cc |
| Maximum output | 30.1kW(40.9PS) / 2500 rpm, Continuous rated output |
| Fuel | Diesel |
| Fuel tank capacity | 75 liters |
| Steering | Hydraulic drive independent of left / right |

| Crane model | URW1006C2E-1 |
|----------------|-------------------|
| ① Total width | 2000mm |
| ② Total height | 2460mm |
| ③ Total length | 6060mm |
| Mass of crane | 13840kg [14020kg] |

Standard equipments and Options



This transmitter is subject to alternation in some countries. For more information, contact your local UNIC distributor.

1 Radio remote control

A Standard model
B Safe load indicator model



2 Automatic stop for overwinding



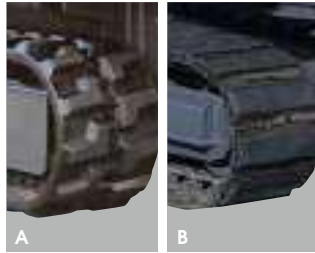
3 Automatic hook block stowing



4 Emergency stop button

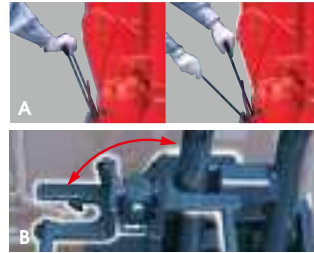


5 Level



6 Black crawler belt

A URW094C, URW295C, URW376C, URW546C, URW547C, URW706C
B URW1006C



7 Inter-lock device of crane and crawling levers

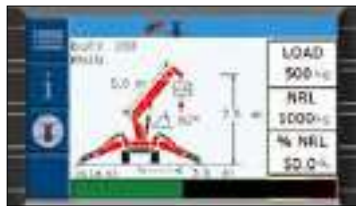
A URW094C, URW295C
B URW376C, URW546C, URW547C, URW706C, URW1006C



8 Headlight



9 Safe load indicator (with outrigger ground contact detector)



10 Automatic stop for overloading (KM-100/ML-300)

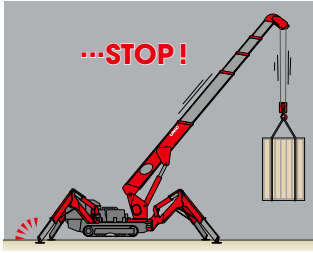


11 Load meter / Digital load meter

STANDARD EQUIPMENTS / OPTIONS [★ Standard, ● Factory-installed option, ○ Option, — Not available]

| Crane model | URW094C | | | URW295C | | | |
|-------------|--|------------|-----------------|-------------------|----------------|------------------|-------|
| | URW094CP2E | URW295CP2A | URW295CP2E-1 | URW295C4A | URW295C4E-1 | URW295CB2A(ECO) | |
| Fuel | Petrol | Petrol | | Diesel | | Battery | |
| 1 | Radio remote control (A / B) | ★ (A) | ★ (A) | ★ (B) | ★ (A) | ★ (B) | ★ (A) |
| 2 | Automatic stop for overwinding | ★ | ★ | ★ | ★ | ★ | ★ |
| 3 | Automatic hook block stowing | ★ | ★ | ★ | ★ | ★ | ★ |
| 4 | Emergency stop button | ★ | ★ | ★ | ★ | ★ | ★ |
| 5 | Level | ★ | ★ | ★ | ★ | ★ | ★ |
| 6 | Black crawler belt (A / B) | ★ (A) | ★ (A) | ★ (A) | ★ (A) | ★ (A) | ★ (A) |
| 7 | Inter-lock device of crane and crawling levers | ★ (A) | ★ (A) | ★ (A) | ★ (A) | ★ (A) | ★ (A) |
| 8 | Head light | — | — | ★ | — | ★ | — |
| 9 | Safe load indicator (with outrigger ground contact detector) | — | — | ★ | — | ★ | — |
| 10 | Automatic stop for overloading (KM-100/ ML-300) | — | — | — | — | — | — |
| 11 | Load meter | ★ | ★ | — | ★ | — | ★ |
| | Digital load meter | — | — | — | ● | — | ● |
| 12 | Turn over prevention device | — | ★ | — | ★ | — | ★ |
| 13 | Automatic stop for leaving minimum wire rope | ★ | ● | ★ | ● | ★ | ● |
| 14 | Three colored lamp | — | — | ★ | ● | ★ | ● |
| | Two colored lamp | — | — | — | — | — | — |
| 15 | Oil cooler | — | — | — | — | — | — |
| 16 | Fly jib with single line hook (Manual) | — | — | ○ | — | ○ | — |
| | Fly jib with single line hook (Hydraulic tilt) | — | — | — | — | — | — |
| 17 | Single line hook | — | — | ○ | — | ○ | ○ |
| 18 | Searcher hook assembly | — | — | ○ | — | ○ | — |
| 19 | Working light | ● | — | — | ● | ● | — |
| 20 | Outrigger mats | ○ | ○ | ○ | ○ | ○ | ○ |
| 21 | Gray crawler belt | ● | ● | ● | ● | ● | ● |
| 22 | Gray crawler belt (as spare) | ○ | ○ | ○ | ○ | ○ | ○ |
| 23 | Electric power unit (AC200V or AC400V) [Crane model] | — | ● [URW295CP2AM] | ● [URW295CP2EM-1] | ● [URW295C4AM] | ● [URW295C4EM-1] | — |
| 24 | 20M cable for electric power unit (AC200V or AC400V) | — | ○ | ○ | ○ | ○ | — |
| 25 | 2-part line hook block | — | — | ○ | — | ○ | — |
| 26 | 4-2 multi-part line hook block | — | — | — | — | — | — |

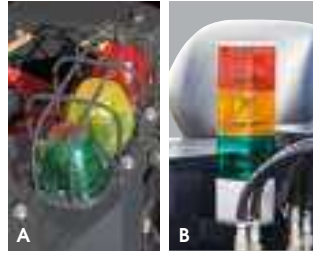
MINI CRAWLER CRANE



12 Turn over prevention device



13 Automatic stop for leaving minimum wire rope



14 Three colored lamp / Two colored lamp

A URW295C
B URW376C, URW546C, URW547C, URW706C, URW1006C



15 Oil cooler



16 Fly jib with single line hook (Manual / Hydraulic tilt)

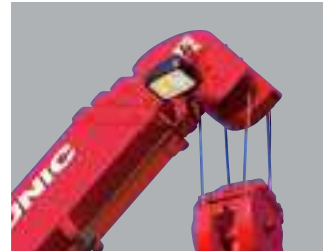
*Searcher hook is included in manual Fly Jib



17 Single line hook



18 Searcher hook assembly



19 Working light



20 Outrigger mats



21 Gray crawler belt

22 Gray crawler belt (as spare)



23 Electric power unit (AC200V or AC400V)

*No cable included

24 20M cable for Electric power unit (AC200V or AC400V)

25 2-part line hook block

26 4-2 multi-part line hook block

| URW376C | | URW546C | | URW547C | | URW706C | | URW1006C | |
|--------------|----------------|--------------|----------------|--------------|----------------|--------------|----------------|-----------------|----|
| URW376C4A | URW376C4E-1 | URW546C4A | URW546C4E-1 | URW547C4A | URW547C4E-1 | URW706C4A | URW706C4E-1 | URW1006C2E-1 | |
| Diesel | | Diesel | | Diesel | | Diesel | | Diesel | |
| ★ (A) | ★ (B) | ★ (A) | ★ (B) | ★ (A) | ★ (B) | ★ (A) | ★ (B) | ★ (B) | 1 |
| ★ | ★ | ★ | ★ | ★ | ★ | ★ | ★ | ★ | 2 |
| ★ | ★ | ★ | ★ | ★ | ★ | ★ | ★ | ★ | 3 |
| ★ | ★ | ★ | ★ | ★ | ★ | ★ | ★ | ★ | 4 |
| ★ | ★ | ★ | ★ | ★ | ★ | ★ | ★ | ★ | 5 |
| ★ (A) | ★ (A) | ★ (A) | ★ (A) | ★ (A) | ★ (A) | ★ (A) | ★ (A) | ★ (B) | 6 |
| ★ (B) | ★ (B) | ★ (B) | ★ (B) | ★ (B) | ★ (B) | ★ (B) | ★ (B) | ★ (B) | 7 |
| ★ | ★ | ★ | ★ | ★ | ★ | ★ | ★ | ★ | 8 |
| — | ★ | — | ★ | — | ★ | — | ★ | ★ | 9 |
| ★ (KM-100) | — | ★ (KM-100) | — | ★ (KM-100) | — | ★ (ML-300) | — | — | 10 |
| — | — | — | — | — | — | — | — | — | 11 |
| ★ | — | ★ | — | ★ | — | — | — | — | 12 |
| — | — | — | — | — | — | — | — | — | 13 |
| ★ | ★ | ★ | ★ | ★ | ★ | ★ | ★ | ★ | 14 |
| ★ | ★ | ★ | ★ | ★ | ★ | — | ★ | ★ | 15 |
| — | — | — | — | — | — | ★ | — | — | 16 |
| ● | ● | ● | ● | ★ | ★ | ★ | ★ | ★ | 17 |
| — | ○ | — | ○ | — | — | — | ○ | — | 18 |
| — | — | — | — | — | — | — | — | — | 19 |
| — | ○ | — | ○ | — | ○ | — | ○ | — | 20 |
| — | — | — | — | — | — | — | — | — | 21 |
| — | — | — | — | — | — | — | — | — | 22 |
| ● | ● | ● | ● | ● | ● | ● | ● | ● | 23 |
| [URW376C4AM] | [URW376C4EM-1] | [URW546C4AM] | [URW546C4EM-1] | [URW547C4AM] | [URW547C4EM-1] | [URW706C4AM] | [URW706C4EM-1] | [URW1006C2EM-1] | 24 |
| ○ | ○ | ○ | ○ | ○ | ○ | ○ | ○ | — | 25 |
| — | — | — | — | — | — | — | — | — | 26 |
| — | — | — | — | — | — | — | ● | ★ | |

UNIC

FURUKAWA UNIC CORPORATION <http://www.uniccrane-global.com/>

Authorized **UNIC** distributor